



## PM-ECO 2 VET



### Advanced Imaging Technologies

#### Ergonomics

- Rotatable LED (0 ~ 30°) :  
tailer to different viewing angles
- Ultra-compact & Ultra-light
- Easy to carry
- Keyboard : For easy and quick access
- Dedicated cart TR 9000
- Streamlined workflow

#### Economics

- The latest platform & more advanced chip-set :  
brings you better image quality and features  
at less cost in a more compact box
- Support PC printer, reduce investment  
& day to day paper cost
- 8G memory card
- 320G hddisk (option)
- Vehicular Charging

#### ECHO

- Advanced technologies :  
i-Image (Intelligent image optimization)  
THI (Tissue Harmonic Image)  
SRA (Speckle Reduction Algorithm)  
Compound imaging
- Full digital beam-former
- Trapezoid
- Automatic PW trace
- Chroma
- AIO(Automatic image optimization)

#### ECO-friendly

- Less radiation
- Less power consumption
- Longer usage life:LED
- Longer battery standby time : >2 hours

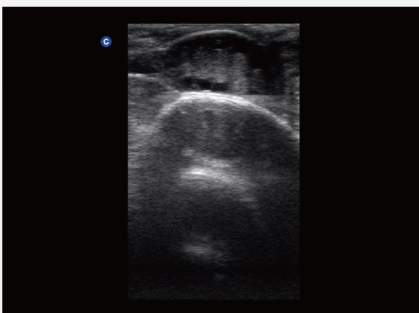
<b>Applications</b>	: Large animal: Reproduction, Tendon. Small animal: Abdomen, Small parts, Basic cardiology.
<b>Display Modes</b>	: B, B/B, 4B, M, B/M, PW
<b>Gray Scale</b>	: 256 Levels
<b>Probe Frequency</b>	: 2.5MHz - 11MHz (Depend on the probe types)
<b>No.of Probe Connectors</b>	: One connector (Standard)
<b>Cine Loop</b>	: 256 frames
<b>Zoom</b>	: PIP zoom & Pan zoom
<b>Software Packages</b>	: Canine : GS, CRL, HD,BD Feline : HD, BD Equine : GS Bovine : BPD, CRL, Trunk Diameter Ovine : BPD, CRL, Trunk Diameter
<b>General Measurements</b>	: B mode: distance, circumference, area, volume, ratio, angle, % stenosis etc. M mode: distance, time, velocity, heart rate etc.
<b>Archives Management</b>	: Patient information management, Patient images record, Patient exam report.
<b>Power Supply</b>	: AC 240V-100V, 50Hz- 60Hz
<b>Optional</b>	: 2nd probe connector, Built-in Battery, DICOM 3.0, Anti-water keyboard cover, Carry Case (BG-100 ), Support PC Printer*, TR 9000



**Excellent PW resolution and automatic PW trace measurement** will greatly improve the diagnosis confidence by delivering both qualitative & quantitative results.



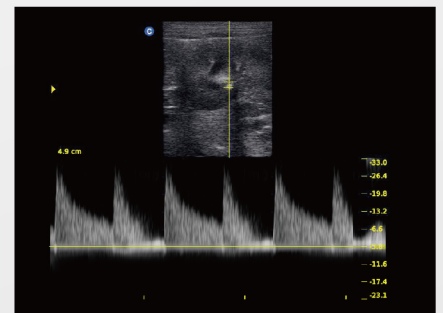
## Great Image Quality



Bovine Ovary, B Mode



Canine Spleen, B Mode



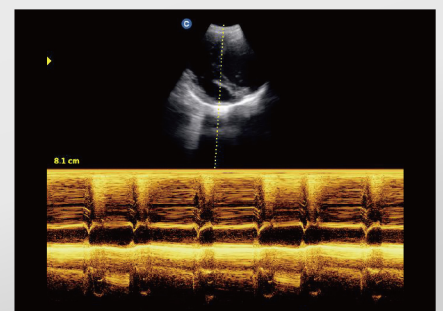
Canine Kidney, PW Mode



Canine Liver, B Mode



Canine Kidney, B Mode



Canine Cardiac, M Mode